



# Directorate of Distance & ONLINE EDUCATION

## MASTER OF ARTS

### ENGLISH

MA (ENG.)  
2024-25



UGC  
ENTITLED



AICTE  
APPROVED



MEMBER  
OF AIU



For more information  
0 7969662588





## Introduction

The Master of Arts in English through online mode is designed to help students develop strong analytical skills and grounding in diverse critical and theoretical approaches. The programme helps students develop specialization in the particular area of English literary studies. The course aims at generating qualified, competent and articulate human resource capable of contributing to relevant domains of knowledge.

An important objective of the Masters programme is to introduce students to advanced study and scholarly activity in order to provide an avenue towards a PhD for those who wish eventually to seek a career in the academia. In addition, the course is designed to provide a reasonably complete higher education in literary studies for those who do not intend to proceed to a further degree in the field but who may branch into other areas as diverse as publishing, editing, journalism, administration, management, communications, or teaching at the high school level.

The programme offers various compulsory courses providing training in Linguistics and English language, grounding in the genre, eras and movements in English literatures, a hands-on acquaintance with literary criticism as well as literary and critical theory. To create informed and motivated scholars, academics, litterateurs and communicators this programme adopts a comparative, contextualized and interdisciplinary perspective drawn from contemporary view of literature and culture.

## Programme's Mission and Objectives

### **Mission:**

To develop reached and unreached students into a new generation of leaders through updated quality education and carrier assistance by open and distance learning.

### **Objectives:**

M.A English programme through online mode at Mangalayatan University is designed after acknowledging essential quality inputs received from students, alumni, parents, academicians, teachers and also incorporating the contribution of the ability which enable a learner to develop critical thinking and decision making skills so that they can identify and analyze problems, develop feasible alternatives and make decisions effectively and efficiently.

M.A programme will help students in acquiring specialised knowledge for developing the terminology and practical elements of literary criticism and theory; also will be able to analyse the underlying meaning of Indian English poetry, fiction, American fiction and so on.



## Instructional Design

The program is divided into four semesters and minimum credit requirement is 80 to get M.A degree through OL mode from Mangalayatan University. Minimum time period for acquiring M.A degree will be two years and maximum (extended) time period is 4 years.

### SEMESTER - I

S.No.	Course Code	Course	Credit	Continuous Assessment	Term End Exam	Grand Total
		<b>Theory</b>		<b>MAX</b>	<b>MAX</b>	
1	ENM-6111	The Structure of Modern English	4	30	70	100
2	ENM-6112	British Prose-I	4	30	70	100
3	ENM-6113	English Drama	4	30	70	100
4	ENM-6114	British Poetry-I	4	30	70	100
5	ENM-6115	British Fiction	4	30	70	100
<b>TOTAL</b>			<b>20</b>	<b>150</b>	<b>350</b>	<b>500</b>

### SEMESTER - II

S.No.	Course Code	Course	Credit	Continuous Assessment	Term End Exam	Grand Total
		<b>Theory</b>		<b>MAX</b>	<b>MAX</b>	
1	ENM-6211	Fundamentals of Linguistics & ELT	4	30	70	100
2	ENM-6212	Shakespeare	4	30	70	100
3	ENM-6213	Literary Criticism And Theory	4	30	70	100
4	ENM-6214	British Poetry-II	4	30	70	100
5	ENM-6215	British Prose-II	4	30	70	100
<b>TOTAL</b>			<b>20</b>	<b>150</b>	<b>350</b>	<b>500</b>

### SEMESTER - III

S.No.	Course Code	Course	Credit	Continuous Assessment	Term End Exam	Grand Total
		<b>Theory</b>		<b>MAX</b>	<b>MAX</b>	
1	ENM-7111	Romantic Poetry	4	30	70	100
2	ENM-7112	Twentieth Century Poetry and Drama	4	30	70	100
3	ENM-7113	Indian English Literature	4	30	70	100
4	ENM-7114	American Literature	4	30	70	100
5	ENM-7116	New Literatures in English	4	30	70	100
<b>TOTAL</b>			<b>20</b>	<b>150</b>	<b>350</b>	<b>500</b>

SEMESTER - IV						
S.No.	Course Code	Course	Credit	Continuous Assessment	Term End Exam	Grand Total
		<b>Theory</b>		<b>MAX</b>	<b>MAX</b>	
1	ENM-7211	Twentieth Century Novels	4	30	70	100
2	ENM-7212	Indian Fiction in English	4	30	70	100
3	ENM-7213	Research Methodology	4	30	70	100
4	ENM-7214	English Literature from Chaucer to Milton	4	30	70	100
5	ENM-7291	Dissertation	4	30	70	100
<b>TOTAL</b>			<b>20</b>	<b>150</b>	<b>350</b>	<b>500</b>

## Syllabi and Course Materials

Syllabi, PPR and self-learning materials are developed mostly by experienced faculty members of Mangalayatan University in consultation with contents experts and the same will be forwarded to CIQA and Board of Studies/Academic Council/ Executive Council for further suggestions and approval.

## Study Material

The study material in digital format (e – content) of the programme shall be supplied to the students unit - wise for every course.

## Video Lectures

The Video lectures as prescribed by the UGC Regulation shall be made available on the LMS portal of the University.

## Online Counselling Sessions

The online counselling sessions shall be scheduled beforehand by the Subject Coordinator and informed to the learners. There shall be 6 online counselling sessions / contact classes of 2 hours each for a 4 credit course, held on Saturdays and Sundays. In case of 2 credits course there shall be 4 sessions of 2 hours each and in case of 6 credits course there shall be 8 sessions of 2 hours each.

## Medium of Instruction

Medium of Course Instruction: English  
Medium of Examination: English

## Student Support Systems

The university will appoint programme coordinators, course coordinator and course mentors to facilitate the learners in their learning.

Finally, The university has made appropriate arrangements for various support services including online counselling and resource-oriented-services, evaluation methods for both on and off line modes for easy and smooth services to the students' through online mode.

## Procedure for Admissions, Curriculum, Transaction and Evaluation

### FEE STRUCTURE

Name of the Program	Degree	Duration	One Time Reg. Fee	Semester Fee	Exam Fee Per Semester	Full Year Fee	Total Fees
Master of Arts (English)	PG	2 Years	1000	8000	1000	19000	37000
<b>Total</b>							<b>37000</b>

### ACTIVITY SCHEDULE

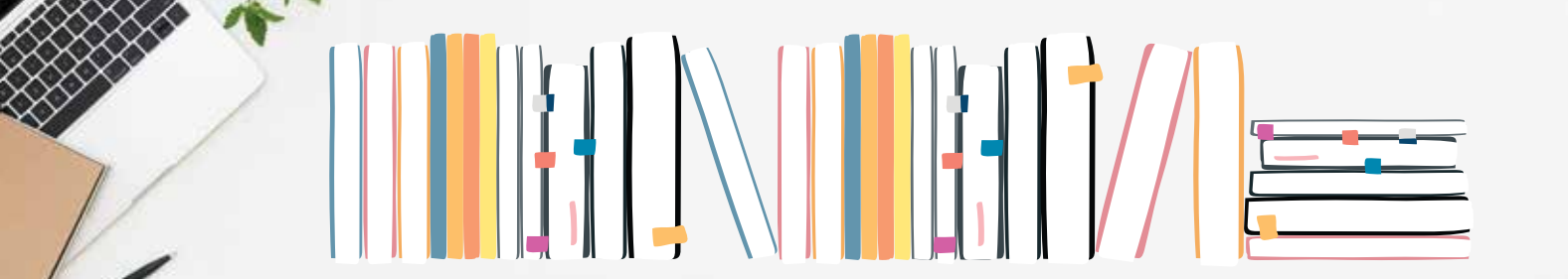
S.NO.	Name of the Activity	Tentative months schedule (specify months) during year			
		From(Month)	To (Month)	From(Month)	To (Month)
1	Admission	Jul	Sep	Jan	Mar
2	Assignment submission (if any)	Sep	Oct	Mar	Apr
3	Evaluation of Assignment	Oct	Nov	Apr	May
4	Examination	Dec	Dec	Jun	Jun
5	Declaration of Result	Jan	Jan	Jul	Jul
6	Re-registration	Jul	Jul	Jan	Jan
7	Distribution of SLM	Jul	Sep	Jan	Mar
8	Contact Programmes (counselling, Practicals.etc.)	Sep	Nov	Mar	May

### CREDIT SYSTEM

Duration of the Programme	Credits	Name of the Programme	Level of the Programme
2 Yrs.	80	M.A. English.	Master's Degree (General)







## Why Online Education?

- Comfortable and Flexible.
- Convenience of attending classes from home.
- Cost Effective.
- Time saving.
- No commuting.
- Monetary benefits- No textbooks required.
- Repeated access to the same lecture.
- Study anytime, anywhere.
- Write proctored exam from home

## Admission Process

- Register with Mangalayatan Online Programs
- Pay Registration fees through our available payment gateways
- Upload relevant documents and mark sheets
- Get provisional admission
- Pay semester fees
- Get admission confirmation from University
- Roll number allotted to every student
- LMS id and password creation.

